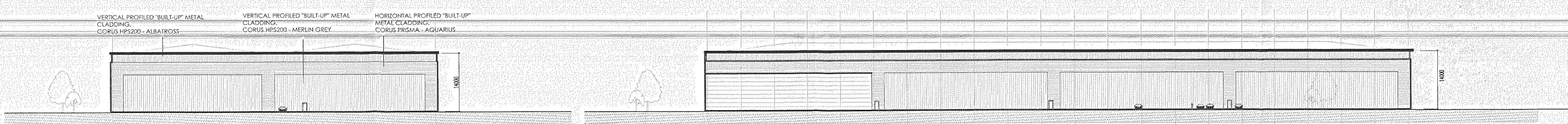


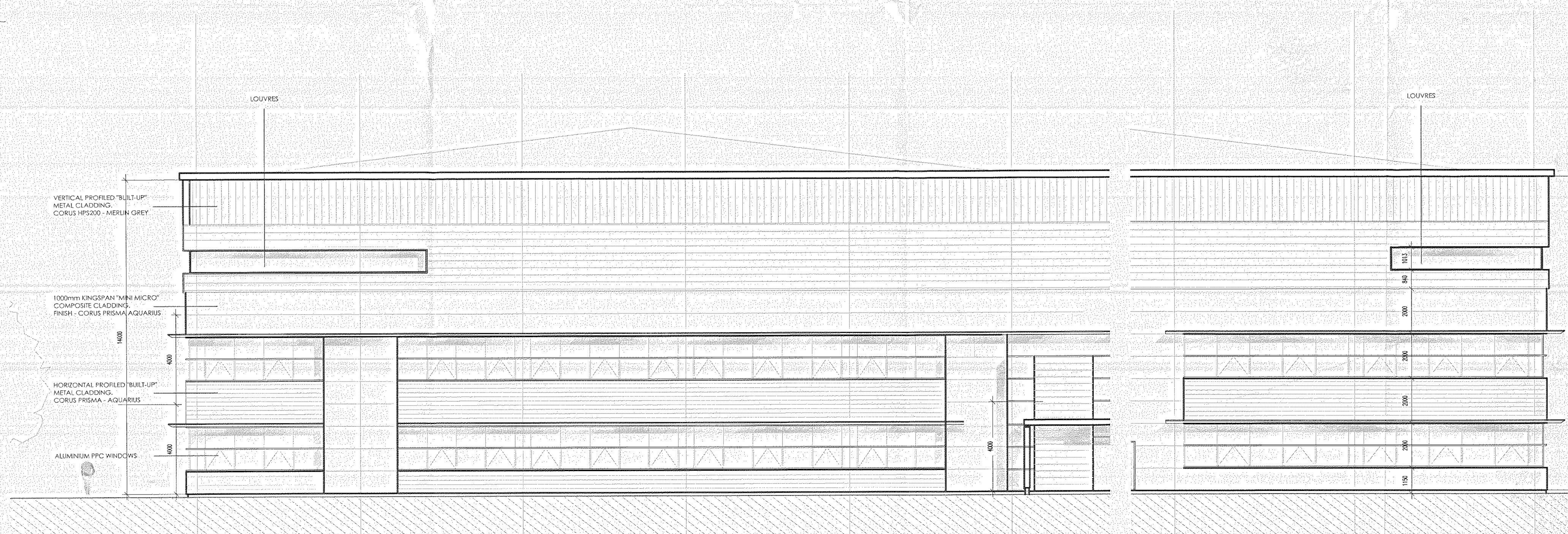
SOUTH ELEVATION

EAST ELEVATION



WEST ELEVATION

NORTH ELEVATION



OFFICE ELEVATION (EAST)

OFFICE ELEVATION (SOUTH)

STOCKTON BOROUGH COUNCIL
 PLANNING
 10 AUG 2007
 DATE RECEIVED

07/2407/1-1

WYNYARD HS120
 UNIT E
 ELEVATION

PLANNING

A 15.05.07 DRAWING NOTE UPDATED FROM 'PRELIMINARY' TO 'PLANNING' AD

REV	DATE	DESCRIPTION	DRAWN BY

FletcherArchitects
 Designers & Master Planners

UNITS 1 & 2 RIVERSIDE MEWS
 COMMERCIAL STREET
 MANCHESTER M15 4RQ
 T +44(0)161 838 5360
 F +44(0)161 838 5361
 office@fletcherarchitects-uk.com
 www.fletcherarchitects-uk.com

PROPOSED COMMERCIAL DEVELOPMENT
 for WYNYARD
 UNIT E - ELEVATIONS
 STATUS: P P • PRELIMINARY T • TENDER S • SUBMIT
 DRAWN: SHP CHECKED BY: 17.01.07
 1:500@A1

UNIT E - ELEVATIONS
 WYNYARD HS120

SCALE 1:500@ A1

1562 - PL21 | A